



Kelly M Beard
www.KarmicTools.com

Powerful Tools to Navigate Your Path!

Presents ...

Access Your Team Remembering Your Invisible Assistance

Featuring ... The Goddess Knowledge Cards

This reading is to remind you of who you have descended from and what energy is always available to you to call on for assistance. This reading is based on your Destiny Number, which is your birthday added all together.

Example: $1/1/1960 = 1+1+1+9+6+0 = 1+8 = 9$

So that would be a 9 Destiny Number, which would give you a team of 9 Members.

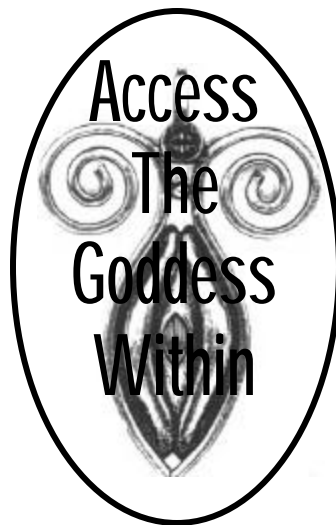
Re-Read this often to re-mind your Self of your innate Power Source; what you're made of! This is Accessing Your Ancestors for guidance!

Use the following to re-member, to re-connect, clarify and inspire you to effective action on your own behalf.

You deserve to nurture your own potential!

This reading can be one card, if your Destiny Number is 1, or up to 9 cards. This is your "team" ~ who you have access to for infinite love and support on your Path at this time.

Your
Name



The
Date
2007

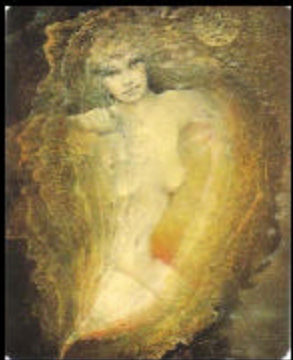
The Goddess Knowledge Cards

Paintings by Susan Seddon Boulet / Text by Michael Babcock / Published by Pomegranate
To Purchase Deck: www.Cosmic-Switchboard.com/KarmicTools.html



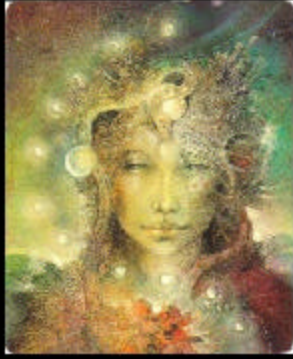
Valkyrie

The Bird Goddess is one of the most ancient goddesses, both a life-giving creator and a goddess of death and regeneration. The Valkyrie, a northern European goddess, is a representation of this goddess as death wielder. The bird guise of the Valkyrie is that of the raven, long associated with death and magic. The name Valkyrie means “chooser of the slain”; the face and form of the Valkyrie are the last thing a person sees before death. Valkyries are psychopomps who lead the soul to the afterworld. For ancient people death was part of a cyclical process leading again to rebirth; black was a positive color, a symbol of fertility and abundance. The Valkyrie represents that part of us that is unafraid of the dark places; she can lead us into and through them. She reminds us that seeds germinate in the darkness, that sometimes we need darkness in order to grow.



Venus*

Venus is the Roman goddess of grace and love, called Aphrodite by the Greeks. She evolved from an early Italian nature goddess, a bringer of spring blooms and vines, a goddess of growth and the beauty of nature. The goddess of desire, Venus was the irresistible personification of both physical and spiritual love. She gave her name to the second planet of dawn and dusk, as did her sister goddesses, Inanna (Sumeria) and Ishtar (Babylonia). The story of Venus’ birth tells how she arose, naked, from the sea, the source of all life (primordial creation) and a symbol of both the collective unconscious and eternity. It is a wonderful image for the emergence of a young woman into her full femininity. Venus is a striking affirmation of the love of beauty and the pleasure of the senses. Risen from the sea, she is a guide through both the stormy and calm waters of our physical desires and emotions.



Athena

Athena is presented by the Greeks as the virgin goddess of war and wisdom. A symbol of courage and friendship, she often counsels warriors to gentleness. She is especially honored as a goddess of agriculture; the creator of the olive tree, the flute, the ship, goldsmithing, and shoemaking; and the goddess who introduced the yoke for the oxen and the bridle for the horse. She is a patron of all useful and elegant arts. In Greek mythology, Athena is said to have breathed soul into the men created by Prometheus and to have helped Prometheus steal fire from the heavens to give to men. Athena is a wonderful affirmation that there are no limits to what a woman can do with her intellect and creative ability.



Selene*

Selene, Queen of the Starlit Heavens, is the ancient Greek goddess of the moon. She carries the moon across the sky in white chariot driven by winged horses or bulls. She is the totality of the moon, with its waxing into fullness and waning into darkness. Selene fell in love with a mortal, Endymion. When she descended to the earth to join Endymion, he fell into a deep sleep from which he never awoke. Selene continued to visit him nightly. In later Greek mythology Selene represented the full moon, while Artemis represented the crescent or waxing moon and Hecate the waning and dark moon; hence Selene is Phoebe, meaning “bright, shining”. She is traditionally represented with the crescent moon as a diadem. Selene represents the fullness of life, incorporating all phases of light and darkness in her shining.